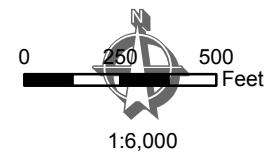


APN 138-110-020



Color Aerials flown Fall 2013. The 2013 imagery used a Ground Sample Distance (GSD) resulting in a 4-band (near infrared, red, green & blue), with 6 inch spatial resolution per pixel. The specified coordinate system for this dataset is California State Plane Zone II (FIPS 0402), NAD83 (2011), with units in US Survey Feet. Map Scale and Reproduction methods limit precision in physical features displayed. This map is for illustrative purpose only, and is not suitable for parcel-specific decision making. The parcels contained here-in are not intended to represent surveyed data. Site-specific studies are required to draw parcel-specific conclusions. Note: Assessor's parcel data are current as of August 9, 2017.

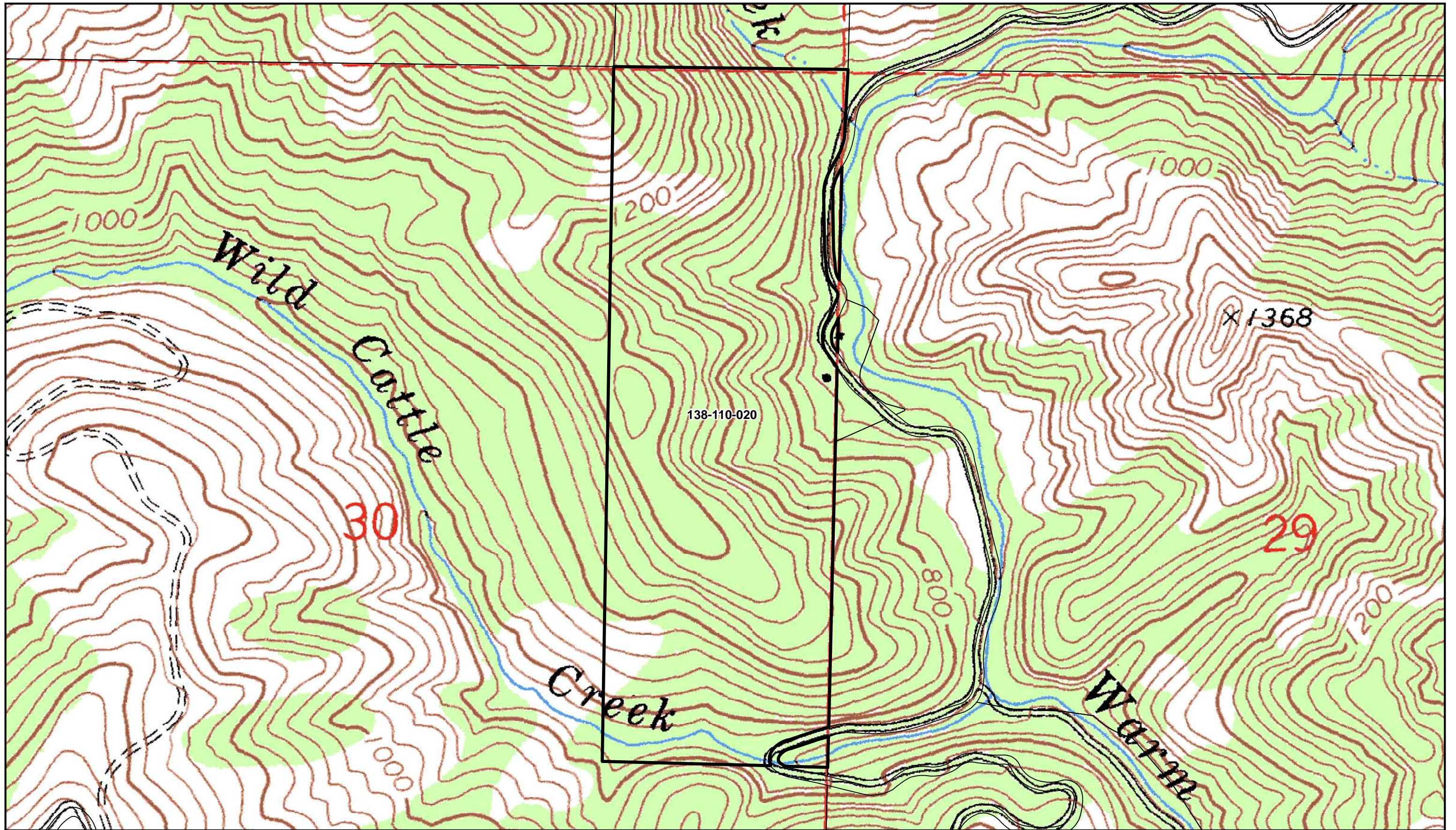


2013 Aerial
County of Sonoma

Permit and Resource Management Department

2550 Ventura Avenue, Santa Rosa, California 95403
707-565-1900 FAX 707-565-1103

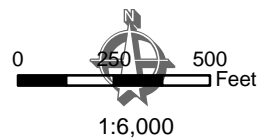




APN 138-110-020
USGS Quad: 12, Warm Springs Dam (40 Ft. Contour Interval)

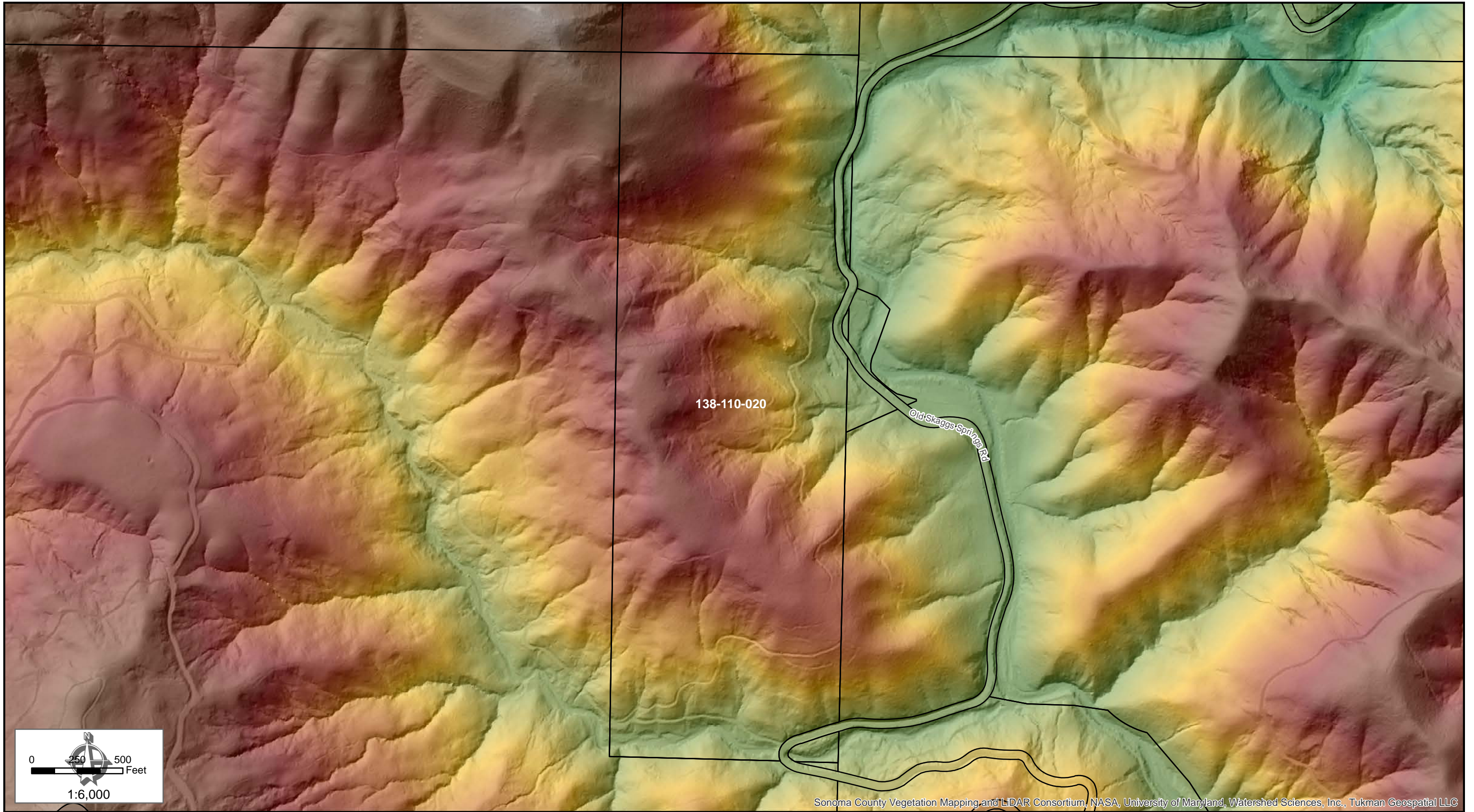
Map Scale and Reproduction methods limit precision in physical features displayed. This map is for illustrative purpose only, and is not suitable for parcel-specific decision making. The parcels contained here-in are not intended to represent surveyed data. Site-specific studies are required to draw parcel-specific conclusions. Assessor's parcel data are current as of August 9, 2017.

No part of this map may be copied, reproduced, or transmitted in any form or by any means without written permission from the Permit and Resource Management Department (PRMD), County of Sonoma, California.



USGS Topographic
County of Sonoma
Permit and Resource Management Department
2550 Ventura Avenue, Santa Rosa, California 95403
707-565-1900
FAX 707-565-1103

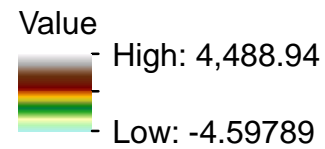




A bare earth digital elevation model (DEM) represents the earth's surface with all vegetation and human-made structures removed. The bare earth DEMs were derived from LiDAR data using triangulated irregular network (TIN) processing of the ground point returns. Each image corresponds to a 37,800-square-foot tile. Each pixel is 3 feet and represents an average elevation for that area. The specified coordinate system for this dataset is California State Plane Zone II (FIPS 0402), NAD83 (2011), with units in US Survey Feet for horizontal, and vertical units are NAVD88 (12A) US Survey Feet. The dataset encompasses a portion of Sonoma County. WS collected the LiDAR and created this data set for the Sonoma County Vegetation Mapping and LiDAR Consortium.

Map Scale and Reproduction methods limit precision in physical features displayed. This map is for illustrative purpose only, and is not suitable for parcel-specific decision making. The parcels contained here-in are not intended to represent surveyed data. Site-specific studies are required to draw parcel-specific conclusions. Assessor's parcel data are current as of August 9, 2017. For more current parcel data consult the County of Sonoma Assessor's Office.

LiDAR 2013 Bare Earth DEM - Elevation Above Sea Level



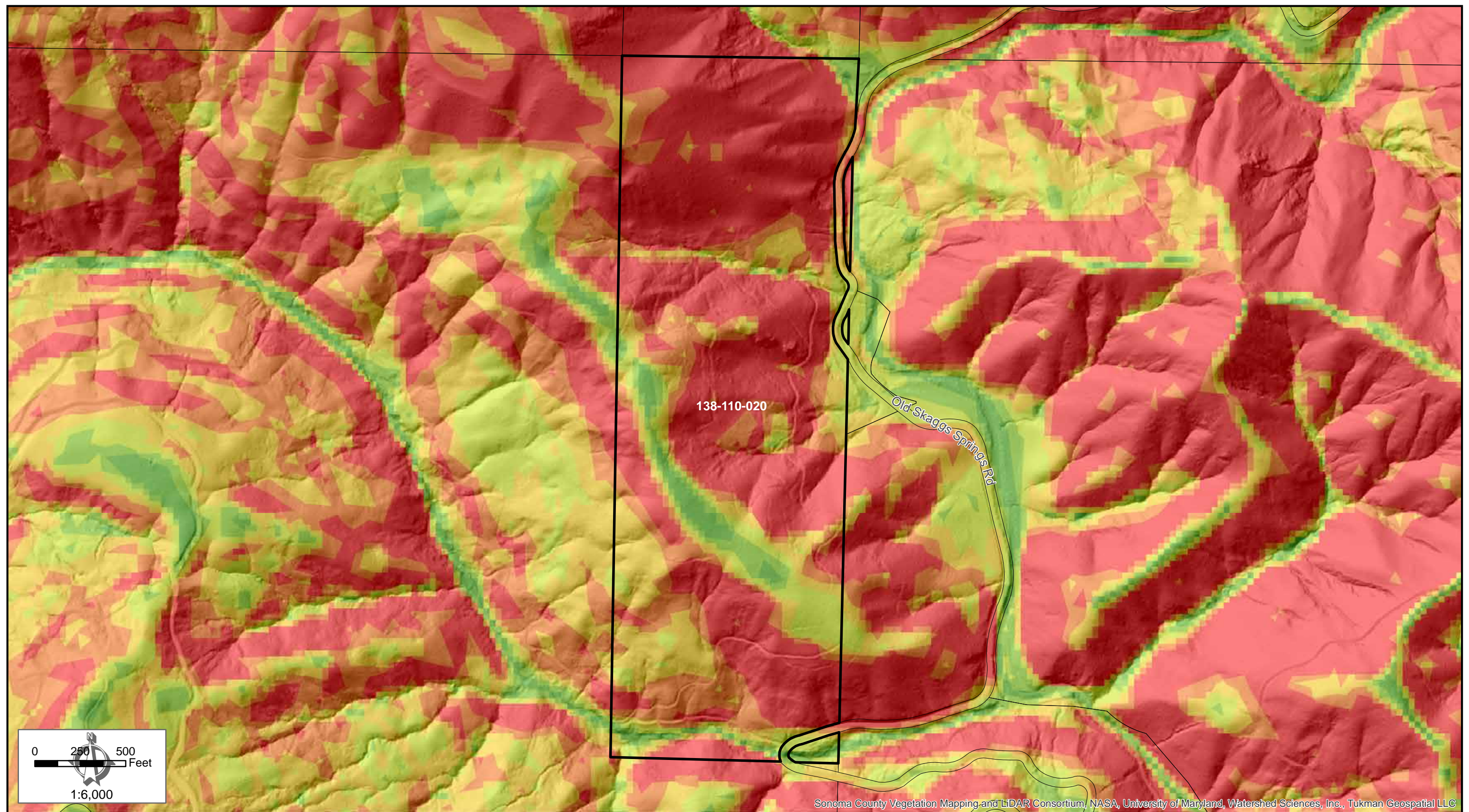
Digital Terrain Elevation

County of Sonoma

Permit and Resource Management Department

2550 Ventura Avenue, Santa Rosa, California 95403
707-565-1900 FAX 707-565-1103






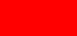




A bare earth digital elevation model (DEM) represents the earth's surface with all vegetation and human-made structures removed. The bare earth DEMs were derived from LiDAR data using triangulated irregular network (TIN) processing of the ground point returns. Each image corresponds to a 37,800-square-foot tile. Each pixel is 3 feet and represents an average elevation for that area. The specified coordinate system for this dataset is California State Plane Zone II (FIPS 0402), NAD83 (2011), with units in US Survey Feet for horizontal, and vertical units are NAVD88 (12A) US Survey Feet. The dataset encompasses a portion of Sonoma County. WS collected the LiDAR and created this data set for the Sonoma County Vegetation Mapping and LiDAR Consortium.

Map Scale and Reproduction methods limit precision in physical features displayed. This map is for illustrative purpose only, and is not suitable for parcel-specific decision making. The parcels contained here-in are not intended to represent surveyed data. Site-specific studies are required to draw parcel-specific conclusions. Assessor's parcel data are current as of August 9, 2017. For more current parcel data consult the County of Sonoma Assessor's Office.

Slope by Percentage

 0 - 10	 21 - 30	 41 - 50
 11 - 20	 31 - 40	 Over 50%

Slope by Percent

County of Sonoma

Permit and Resource Management Department

2550 Ventura Avenue, Santa Rosa, California 95403
707-565-1900 FAX 707-565-1103

